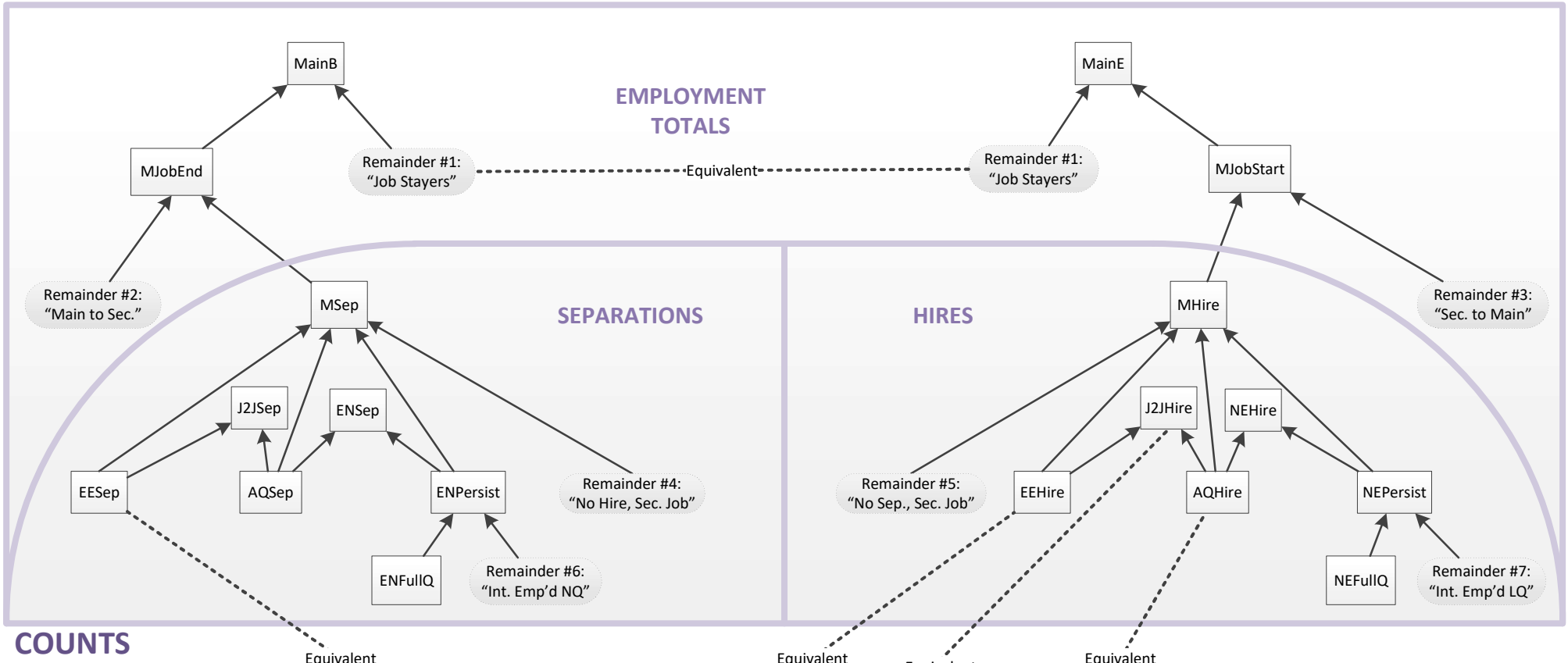
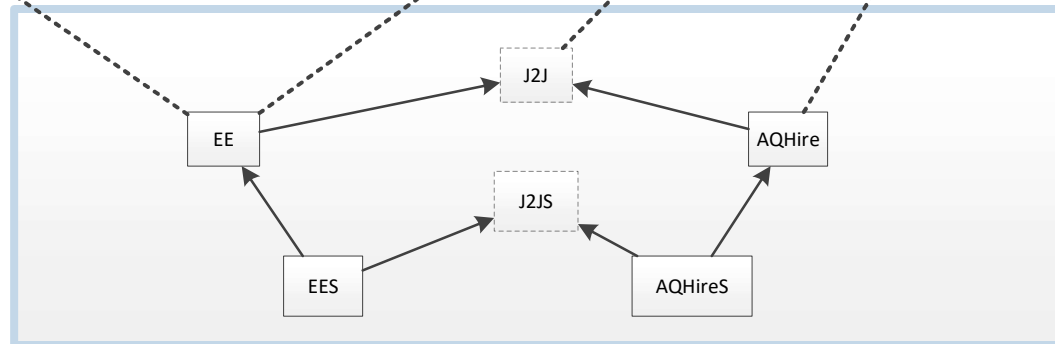


# Job-to-Job Flows (J2J) Measure Relatedness (Overview)



**NOTES:**

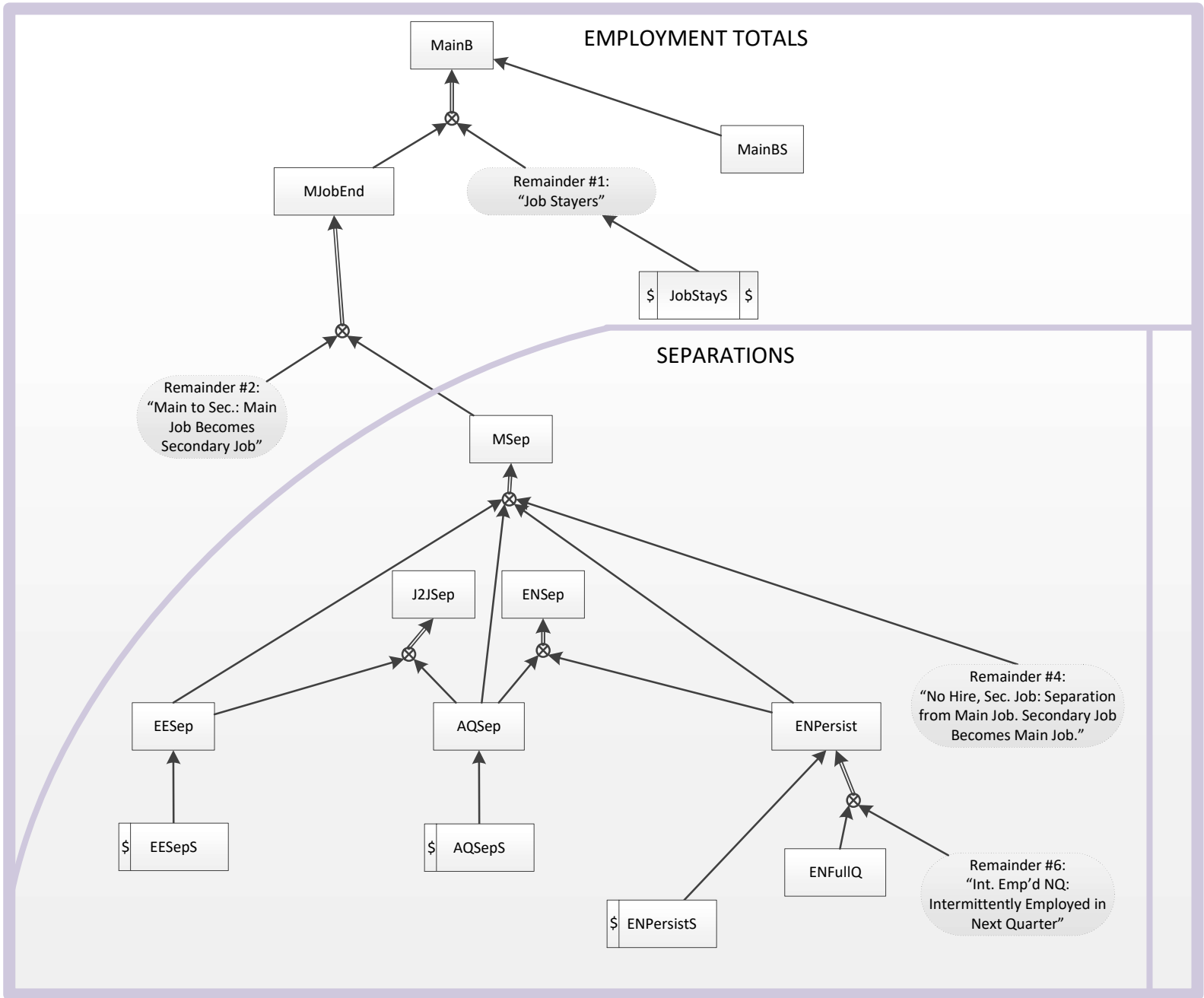
- Details and expanded names for Job-to-Job Flows measures can be found on subsequent pages.
- Not all J2J Measures shown in Overview



**Legend**

- Contributes to
- - - Equivalent to
- Var Published J2J measure
- Var Constructed in data tools, not in raw data files.
- Var Conceptual remainder, not currently implemented.

Additional logical relationships between measures may exist. Some measures have stable variants (signified with an "S" in the name). These stable measures require an additional quarter of employment and exclude short term employment leading to or following the reference quarter. Full technical definitions of published J2J measures are available in Table 1 of Hyatt et al. (2015) available at [lehd.ces.census.gov/doc/jobtojob\\_documentation\\_long.pdf](http://lehd.ces.census.gov/doc/jobtojob_documentation_long.pdf). Destination/Origin earnings for stable workers can be calculated as a weighted average of Destination/Origin earnings for all transitions. See Hyatt et al. (2015) for more information on earnings calculations.



## MEASURES

- MainB:** Employment (Beginning of Quarter)
- MainBS:** Stable Employment (Beginning of Quarter)
- JobStayS:** Stable Job Stayer
- MJobEnd:** Main Job Ends
- MSep:** Main Job Separations
- J2JSep:** Job-to-Job Separations
- ENSep:** Separations to Nonemployment
- EEsep:** Job-to-Job Separations (Continuous Employment)
- EEsepS:** Stable Job-to-Job Separations (Continuous Employment)
- AQSep:** Job-to-Job Separations (Brief Nonemployment)
- AQSepS:** Stable Job-to-Job Separations (Brief Nonemployment)
- ENPersist:** Separations to Persistent Nonemployment
- ENPersistS:** Stable Separations to Persistent Nonemployment
- ENFullQ:** Separations to Full-Quarter Nonemployment

## EARNINGS

- JobStayS is the base for:
  - JobStaySEarn\_Orig
  - JobStaySEarn\_Dest
- ENPersistS is the base for:
  - ENSepSEarn\_Orig
- EEsepS is the base for:
  - EEsepSEarn\_Orig
- AQSepS is the base for:
  - AQSepSEarn\_Orig
- J2JSepS is the base for:
  - J2JSepSEarn\_Orig

## Legend

- Contributes to
- ⊕ Adds to
- Var Published J2J measure
- Var Constructed in data tools, not in raw data files.
- Var Conceptual remainder, not currently implemented. Earnings associated with origin job of measure is available.
- Var \$ Earnings associated with destination job of measure is available.

## COUNTS

Additional logical relationships between measures may exist. Some measures have stable variants (signified with an "S" in the name). These stable measures require an additional quarter of employment and exclude short term employment leading to or following the reference quarter. Full technical definitions of published J2J measures are available in Table 1 of Hyatt et al. (2015) available at [lehd.ces.census.gov/doc/jobtojob\\_documentation\\_long.pdf](http://lehd.ces.census.gov/doc/jobtojob_documentation_long.pdf). Destination/Origin earnings for stable workers can be calculated as a weighted average of Destination/Origin earnings for all transitions. See Hyatt et al. (2015) for more information on earnings calculations.

# Job-to-Jobs Flows (J2J) Measure Relatedness (Hires Detail)

## MEASURES

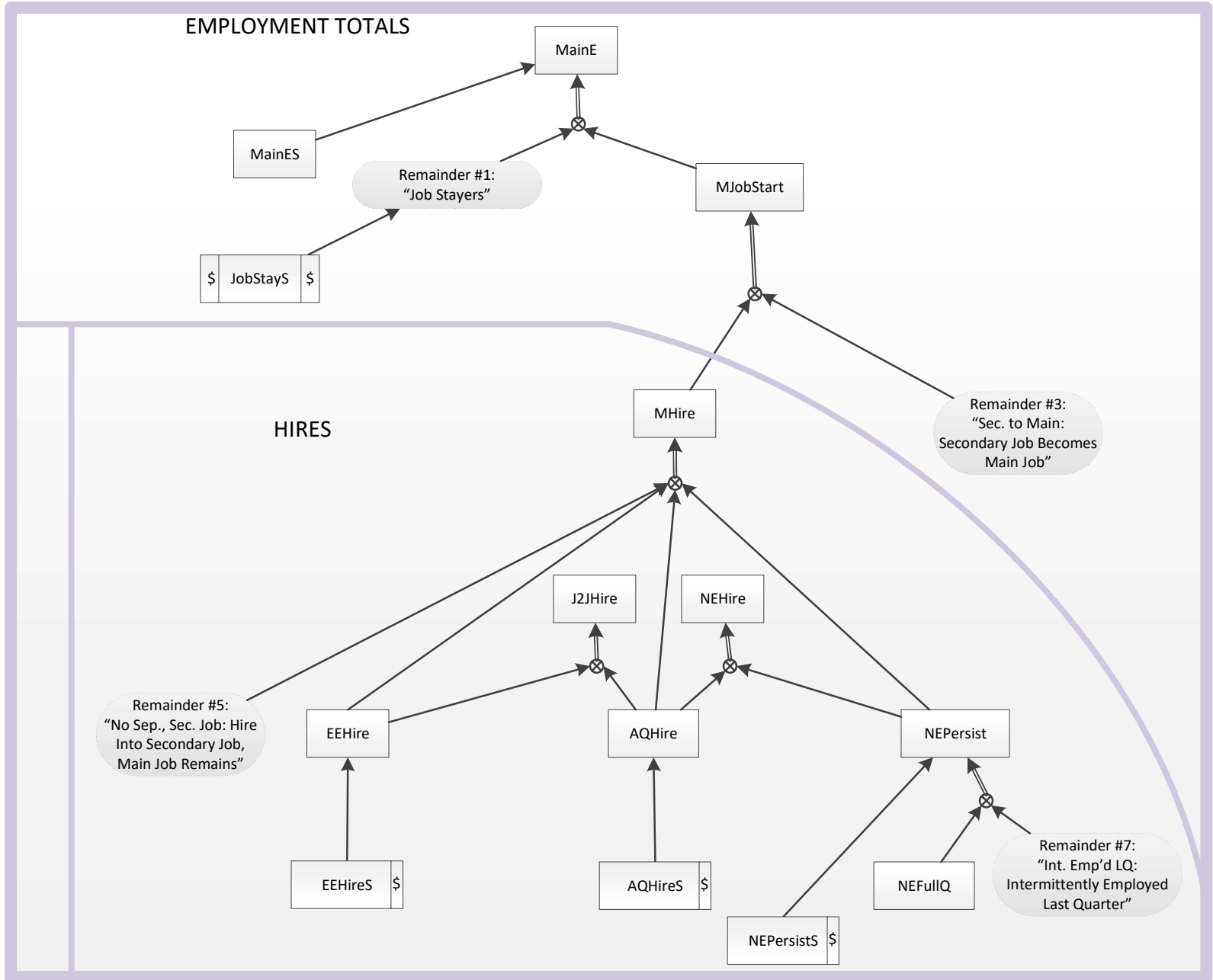
- MainE:** Employment (End of Quarter)
- MainES:** Stable Employment (End of Quarter)
- JobStayS:** Stable Job Stayer
- MJobStart:** Main Job Starts
- MHire:** Main Job Hires
- J2JHire:** Job-to-Job Hires
- NEHire:** Hires from Nonemployment
- EEHire:** Job-to-Job Hires (Continuous Employment)
- EEHireS:** Stable Job-to-Job Hires (Continuous Employment)
- AQHire:** Job-to-Job Hires (Brief Nonemployment)
- AQHireS:** Stable Job-to-Job Hires (Brief Nonemployment)
- NEPersist:** Hires from Persistent Nonemployment
- NEPersistS:** Stable Hires from Persistent Nonemployment
- NEFullIQ:** Hires from Full-Quarter Nonemployment

## EARNINGS

- JobStayS is the base for:
  - JobStaySEarn\_Orig
  - JobStaySEarn\_Dest
- NEPersistS is the base for:
  - ENHireSEarn\_Dest
- EEHireS is the base for:
  - EEHireSEarn\_Dest
- AQHireS is the base for:
  - AQHireSEarn\_Dest
- J2JHireS is the base for:
  - J2JHireSEarn\_Dest

## Legend

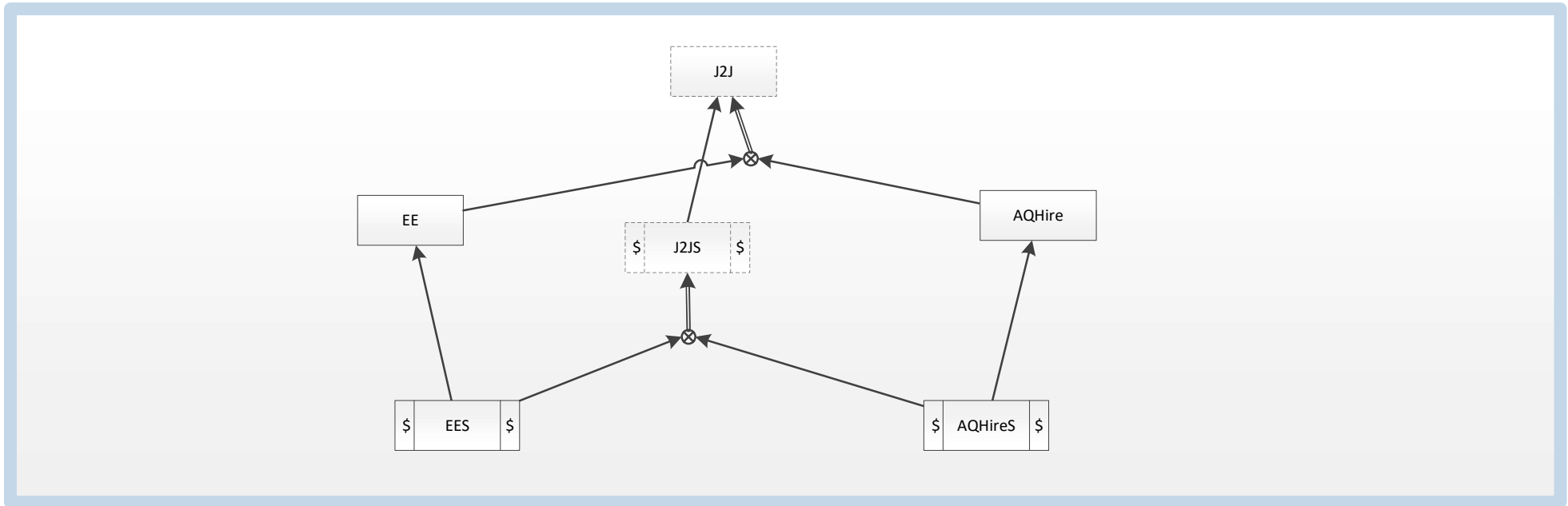
- Contributes to
- Adds to
- Var Published J2J measure
- Var Constructed in data tools, not in raw data files.
- Var Conceptual remainder, not currently implemented.
- \$ Var Earnings associated with origin job of measure is available.
- Var \$ Earnings associated with destination job of measure is available.



Additional logical relationships between measures may exist. Some measures have stable variants (signified with an "S" in the name). These stable measures require an additional quarter of employment and exclude short term employment leading to or following the reference quarter. Full technical definitions of published J2J measures are available in Table 1 of Hyatt et al. (2015) available at [lehd.ces.census.gov/doc/jobtojob\\_documentation\\_long.pdf](http://lehd.ces.census.gov/doc/jobtojob_documentation_long.pdf). Destination/Origin earnings for stable workers can be calculated as a weighted average of Destination/Origin earnings for all transitions. See Hyatt et al. (2015) for more information on earnings calculations.

## COUNTS

# Job-to-Jobs Flows (J2J) Measure Relatedness (OD Detail)



## ORIGIN-DESTINATION (OD)

### MEASURES

- J2J:** Job-to-Job Hires
- J2JS:** Stable Job-to-Job Hires
- EE:** Job-to-Job Separations/Hires (Continuous Employment)
- EES:** Stable Job-to-Job Separations/Hires (Continuous Employment)
- AQHire:** Job-to-Job Hires (Brief Nonemployment)
- AQHireS:** Stable Job-to-Job Hires (Brief Nonemployment)

### EARNINGS

- J2JS is the base for:
  - J2JSEarn\_Orig
  - J2JSEarn\_Dest
- EES is the base for:
  - EESEarn\_Orig
  - EESEarn\_Dest
- AQHireS is the base for:
  - AQHireSEarn\_Orig
  - AQHireSEarn\_Dest

### RATES

- Explanation of Rates Measures (for Separations, Hires, and OD)
- Most Count measures have comparable Rate measures, which are constructed by dividing the Count Measures by the Base.
  - The Base for all rates is  $(MainB + MainE)/2$
  - Example:  $MHireR = MHire / ((MainB + MainE)/2)$
  - Exceptions are MainB, MainE, and the Remainders.
  - Availability of Rate measures in data tools and raw data are the same as the comparable Count measures.

### Legend

- Contributes to
- Adds to
- Var** Published J2J measure
- Var** Constructed in data tools, not in raw data files.
- Var** Conceptual remainder, not currently implemented.
- \$ Var** Earnings associated with origin job of measure is available.
- Var \$** Earnings associated with destination job of measure is available.

Additional logical relationships between measures may exist. Some measures have stable variants (signified with an "S" in the name). These stable measures require an additional quarter of employment and exclude short term employment leading to or following the reference quarter. Full technical definitions of published J2J measures are available in Table 1 of Hyatt et al. (2015) available at [lehd.ces.census.gov/doc/jobtojob\\_documentation\\_long.pdf](http://lehd.ces.census.gov/doc/jobtojob_documentation_long.pdf). Destination/Origin earnings for stable workers can be calculated as a weighted average of Destination/Origin earnings for all transitions. See Hyatt et al. (2015) for more information on earnings calculations.